

One layer efficiency

Creating an esthetic crown using GC America's Initial IQ-One Body Layering-Over-Metal system.

By Luke Kahng, CDT, LSK 121 Oral Prosthetics. Information provided by GC America Inc.

GC Initial IQ-One Body, Layering-over-Metal concept enables dental technicians to achieve simple and economical reproduction of standard Vita shades by the application of a single layer. A true one powder build ceramic without compromising esthetics, this com-

pact system enables reproduction of the same esthetic results time and again with fewer materials. The system comprises four new Body materials, which can be combined with the proven three-dimensional Lustre Pastes allowing laboratories to be more productive

in less time. Crown buildup can be accomplished using only one powder, allowing full attention to shaping and function. The system also is fully compatible with the existing MC/Initial family product line and with many alloys.



Initial IQ-One Bodyring Layering-

Features

- Uses only four ceramics for all 16 standard shades indicated for porcelain-fused-to-metal restorations
- Single layer application to reproduce standard VITA shades
- Four body materials can be combined with three-dimensional Lustre Pastes
- Compatible with many alloys and MC/Initial range of proucts

GC America Inc.

www.gcamerica.com
gca_sales@gcamerica.com

3737 W. 127th St.
Alsip, IL 60803
800-323-7063



Fig. A Pre-operatively, the base color is checked.



Fig. B Premolar occlusion color is then checked.



Fig. C The patient is checked for Translucence Enamel.



Fig. D Next, Blue Enamel color, shown here as BU-1 or Light is checked.



Fig. E The tooth is prepped and the stump color is photographed.

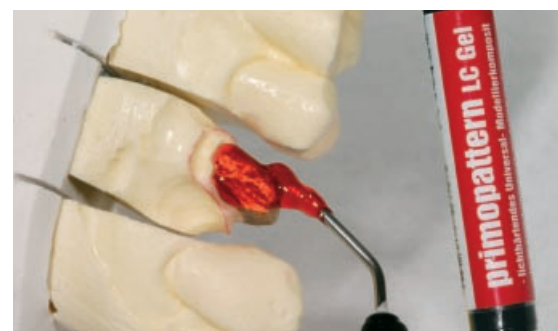


Fig. F A coping was created using Primotec's Primopattern light curing gel.



Fig. G The coping was light-cured for 5 minutes.



Fig. H GC Initial One Body Porcelain, C-1, was layered with no enamel porcelain needed.



Fig. I After firing at 900° C, the enamel color can still be seen.

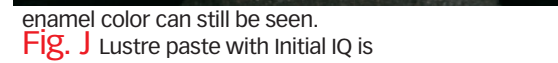


Fig. J Lustre paste with Initial IQ is

CASE STUDY

01 Pre-operatively, the base color is checked using three shade tabs for dentin color: A1, B2 and 4L (Fig. A).

02 Premolar occlusion color was then checked using the LSK Chair Side Shade Selection Guide and determined to be PO-5 or Milky Blue in color (Fig. B). To the author's eye, it could be described as a "pink-blue" tone.

03 Next, Translucence Enamel was checked, and determined it to be #5 or Clear in color (Fig. C) and then for Blue Enamel color, shown here as BU-1, Light (Fig. D).

04 The tooth was prepped and the stump color photographed (Fig. E) with the adjacent tooth color also displayed. The blue tone will be mimicked due to the amalgam filling in premolar No. 6.

05 With Primotec's Primopattern light curing gel (Fig. F), a coping was created and light cured for 5 minutes (Fig. G).

06 GC Initial One Body Porcelain, C-1, was layered on with no enamel porcelain needed (Fig. H).

07 After firing at 900° C, the enamel color is still visible (Fig. I).

08 After this application, the lustre paste was applied with Initial IQ onto the One Body color (Fig. J).

09 Next, brown, gray and pink lustre pastes were mixed together (Fig. K) to create a stain that will, when applied to the crown (Fig. L), match the patient's adjacent teeth.

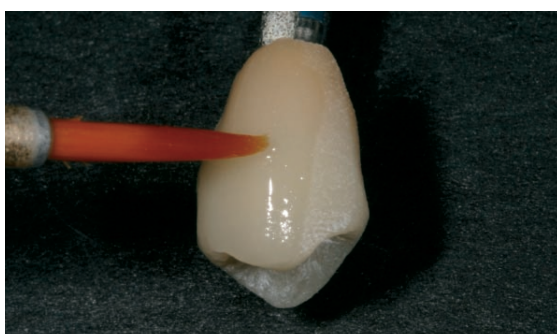
10 The crown, when compared to the form of a natural tooth, is a duplicate (Fig. M).

11 The inside of the crown is displayed on top of the GC IQ One Body bottle (Fig. N) and then again post-cementation in the patient's mouth (Fig. O). **lab**



ABOUT THE AUTHOR

Luke S. Kahng, CDT, owner of LSK121 Oral Prosthetics, has published more than 40 articles in major dental publications. He is the author of the recently published *Anatomy from Nature*, with 50 illustrated pages of full-contour wax-ups, stone models, and porcelain teeth, all re-created using natural teeth as a guide, and the *Esthetic Guide Book* featuring 31 patient cases from a single anterior tooth to a full-mouth reconstruction. His latest book, *Smile Selection + CS³ Clinical Cases*, will be published in 2010. Kahng also invented the patent-pending Chair Side Shade Selection Guide and the Simple Enamel and Prep Color Guide, featuring more than 150 zirconia fabricated restorations based on patient enamel and translucency research. www.LSK121Resources.com



applied on to the One Body color.
Fig. K Brown, gray and pink lustre pastes are mixed together to create a stain.



Fig. N The inside of the crown is displayed on top of the GC IQ One Body bottle.



Fig. L When applied to the crown, it is a match with the patient's adjacent teeth.



Fig. O The crown post-cementation, in the patient's mouth

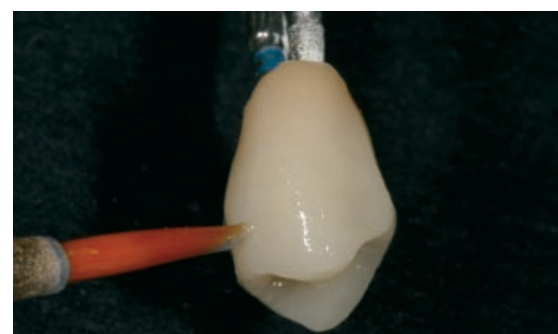


Fig. M The crown, when compared to the form of a natural tooth, is a duplicate.

